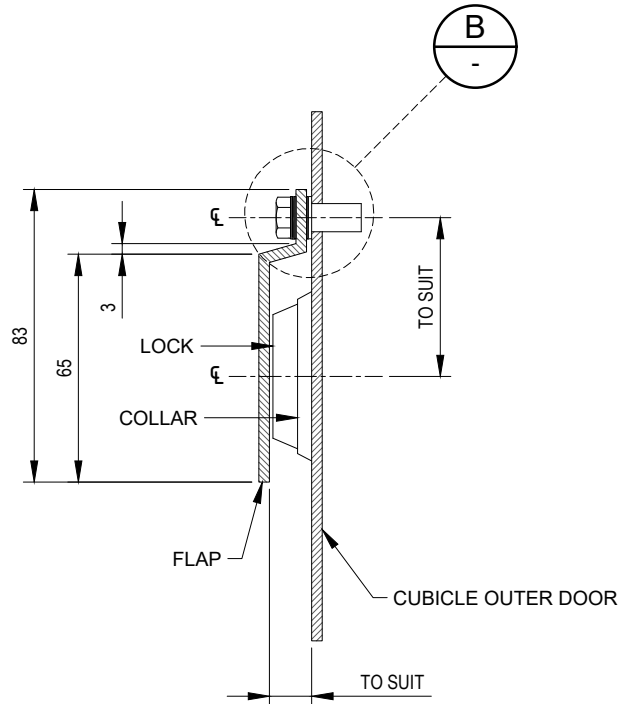
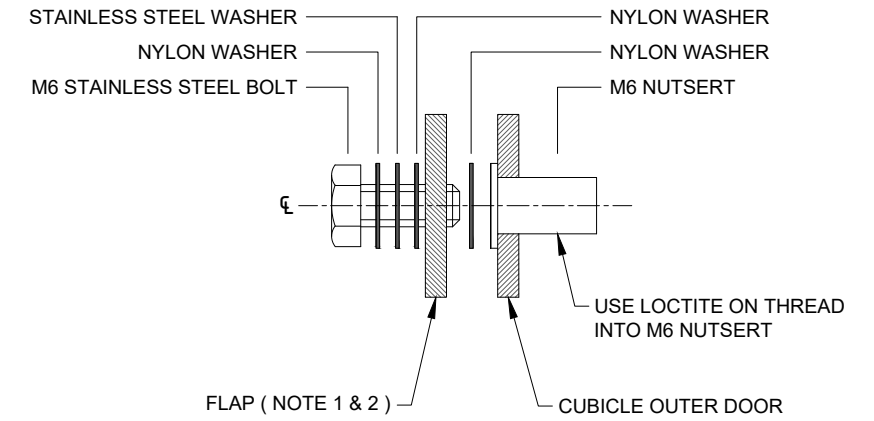


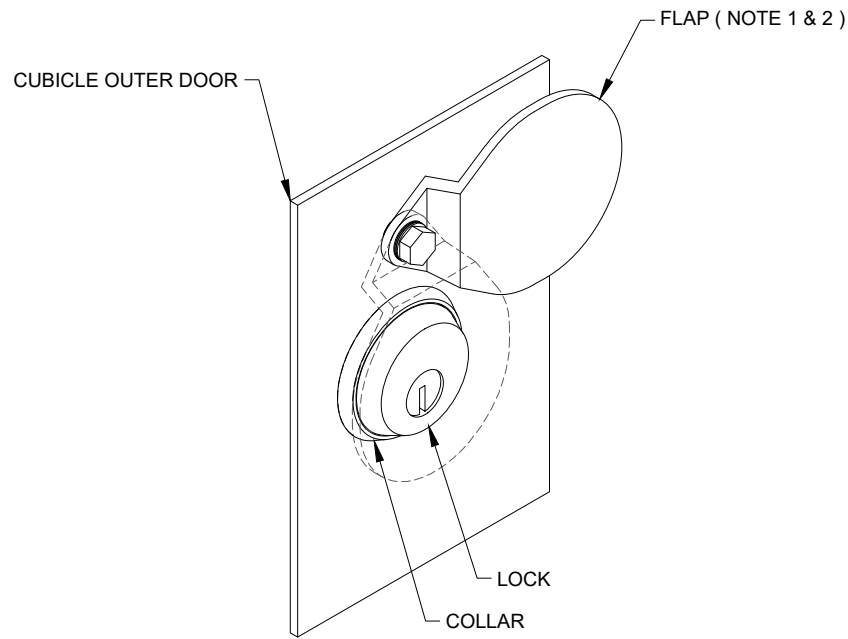
WEATHER FLAP - FRONT ELEVATION



SECTION A



DETAIL B  
NTS



WEATHER FLAP - ISOMETRIC VIEW

NOTES

- POWDER COATED RIVERGUM GREEN G62 TO AS2700 (GLOSS)
- ALUMINIUM THICKNESS 3mm

CAD FILE NAME: C:\Michael Backup\ITC - New Boards 2021\12 - SEW Keyhole Rain Flap\FLAP-STD.E.001 Keyhole Weather Flap.dwg

DESIGNER	J.STREET	DESIGN REVIEW	07.06.21	SEW PROJECT MANAGER	ASSET/ENG. MANAGER
DRAFTER	M.LIM	DRAFT CHECK	07.06.21	COPYRIGHT	
DATE	07.06.21	THIS DOCUMENT IS AND SHALL REMAIN THE PROPERTY OF SOUTH EAST WATER. THIS DOCUMENT MAY ONLY BE USED FOR THE PURPOSE FOR WHICH IT WAS COMMISSIONED AND IN ACCORDANCE WITH THE TERMS OF ENGAGEMENT FOR THE COMMISSION. THIS DESIGN SHOULD NOT BE COPIED OR AMENDED WITHOUT WRITTEN PERMISSION FROM SOUTH EAST WATER. UNAUTHORISED USE OF THIS DOCUMENT IN ANY WAY IS PROHIBITED.			
REV	DESCRIPTION	JOB No	DRAFTER	DES. REVIEW	PM APPO'D
0	FIRST ISSUE				07.06.21

DESIGNER	J.STREET	DESIGN REVIEW	07.06.21	SEW PROJECT MANAGER	ASSET/ENG. MANAGER
DRAFTER	M.LIM	DRAFT CHECK	07.06.21	COPYRIGHT	
DATE	07.06.21	THIS DOCUMENT IS AND SHALL REMAIN THE PROPERTY OF SOUTH EAST WATER. THIS DOCUMENT MAY ONLY BE USED FOR THE PURPOSE FOR WHICH IT WAS COMMISSIONED AND IN ACCORDANCE WITH THE TERMS OF ENGAGEMENT FOR THE COMMISSION. THIS DESIGN SHOULD NOT BE COPIED OR AMENDED WITHOUT WRITTEN PERMISSION FROM SOUTH EAST WATER. UNAUTHORISED USE OF THIS DOCUMENT IN ANY WAY IS PROHIBITED.			
REV	DESCRIPTION	JOB No	DRAFTER	DES. REVIEW	PM APPO'D
0	FIRST ISSUE				07.06.21

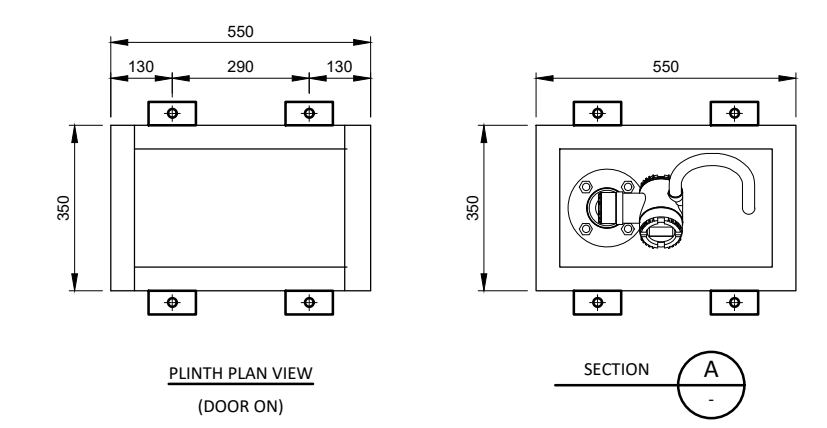
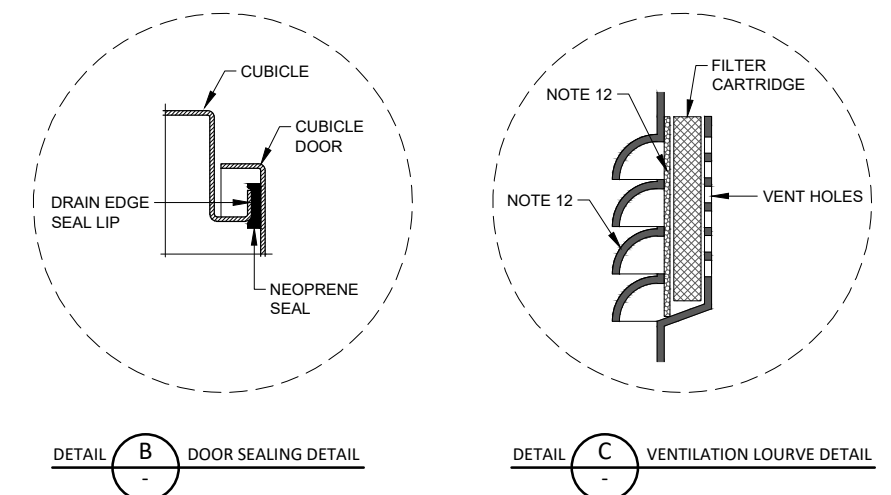
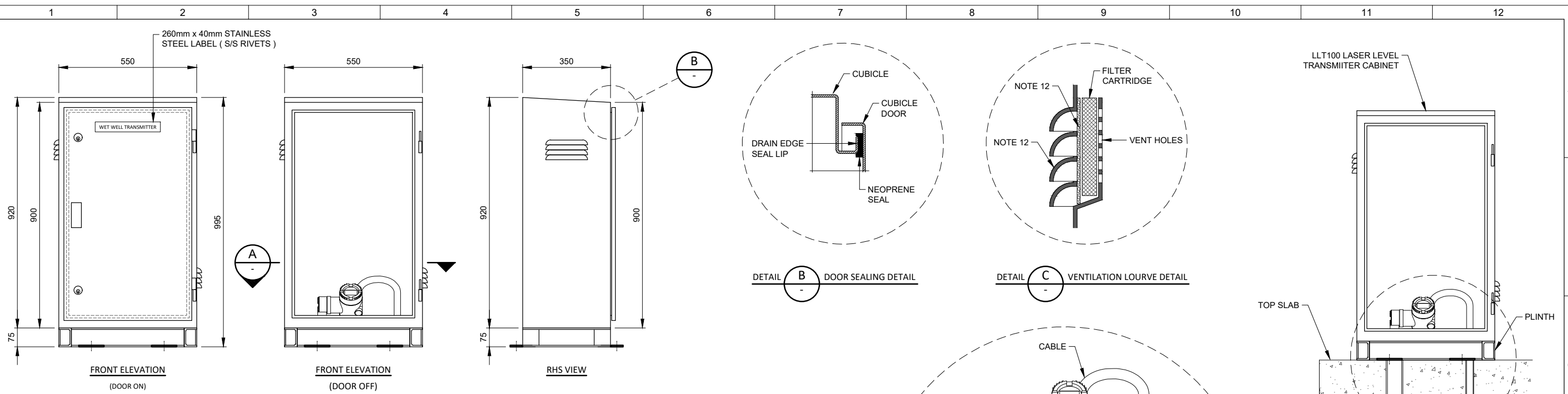
DESIGNER	J.STREET	DESIGN REVIEW	07.06.21	SEW PROJECT MANAGER	ASSET/ENG. MANAGER
DRAFTER	M.LIM	DRAFT CHECK	07.06.21	COPYRIGHT	
DATE	07.06.21	THIS DOCUMENT IS AND SHALL REMAIN THE PROPERTY OF SOUTH EAST WATER. THIS DOCUMENT MAY ONLY BE USED FOR THE PURPOSE FOR WHICH IT WAS COMMISSIONED AND IN ACCORDANCE WITH THE TERMS OF ENGAGEMENT FOR THE COMMISSION. THIS DESIGN SHOULD NOT BE COPIED OR AMENDED WITHOUT WRITTEN PERMISSION FROM SOUTH EAST WATER. UNAUTHORISED USE OF THIS DOCUMENT IN ANY WAY IS PROHIBITED.			
REV	DESCRIPTION	JOB No	DRAFTER	DES. REVIEW	PM APPO'D
0	FIRST ISSUE				07.06.21

**South East Water**

101 Wells Street, Frankston, VIC 3199 W : www.sew.com.au  
T : 61 3 9552 3000 F : 61 3 9552 3001 E : info@sew.com.au

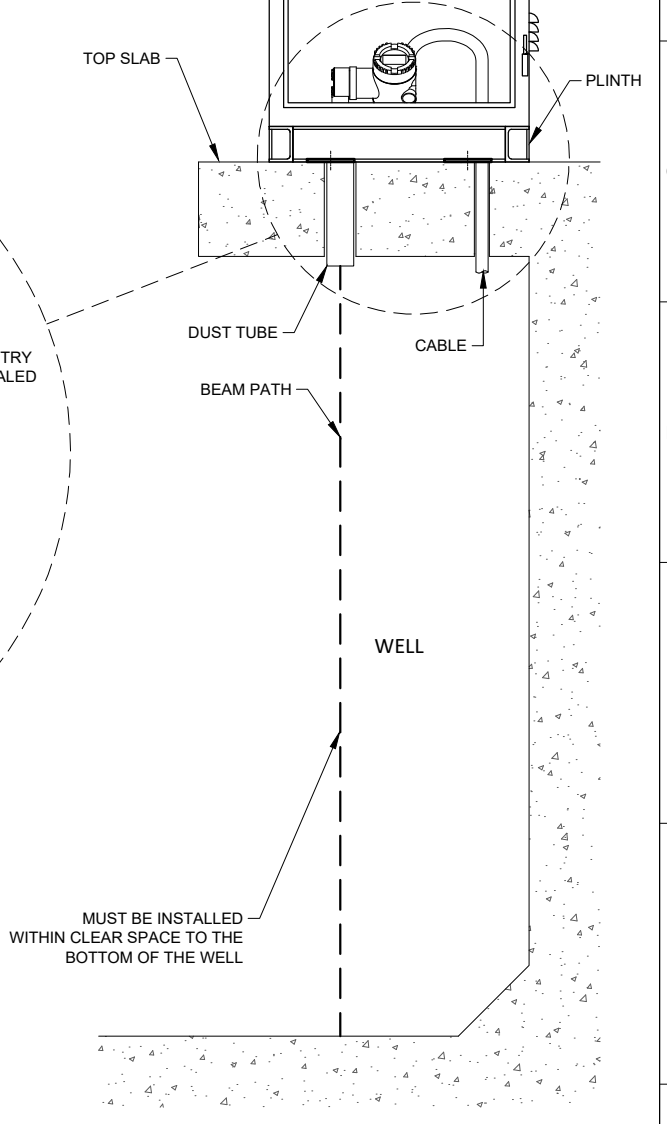
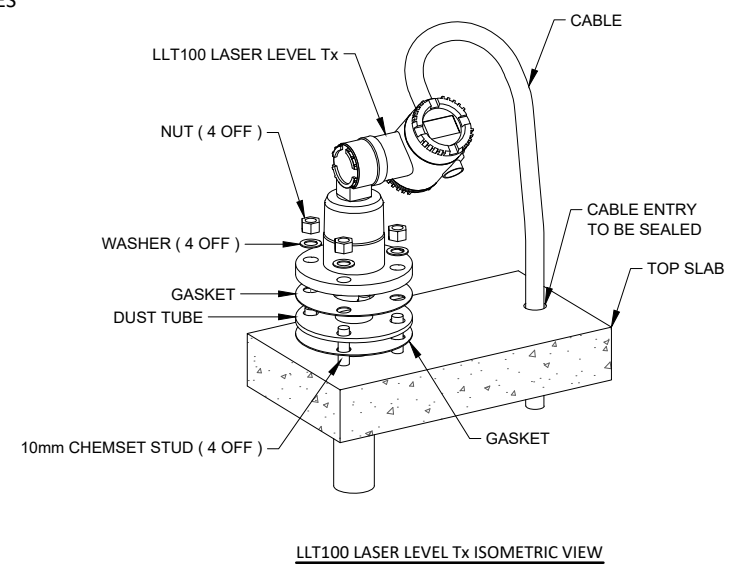
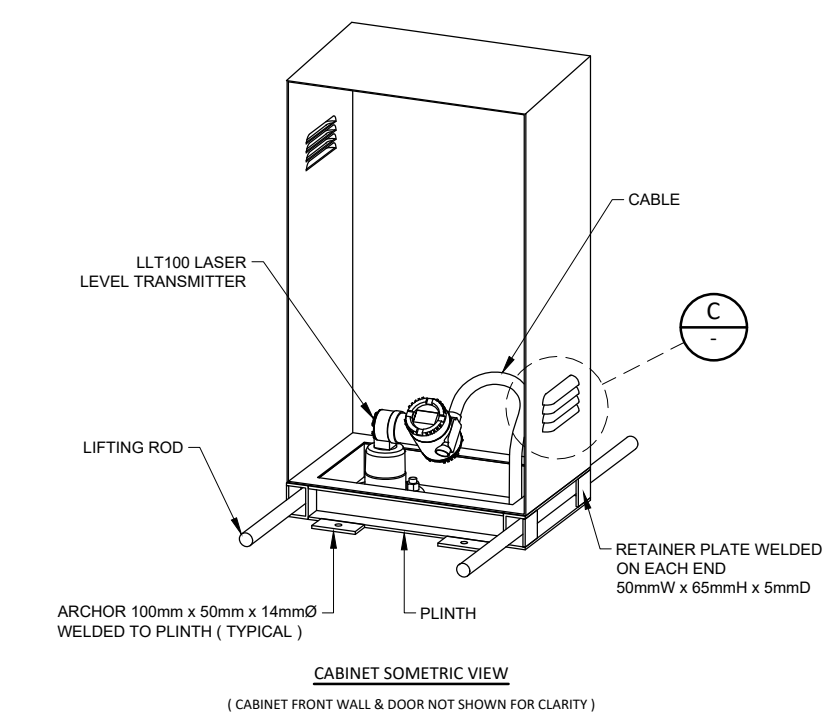
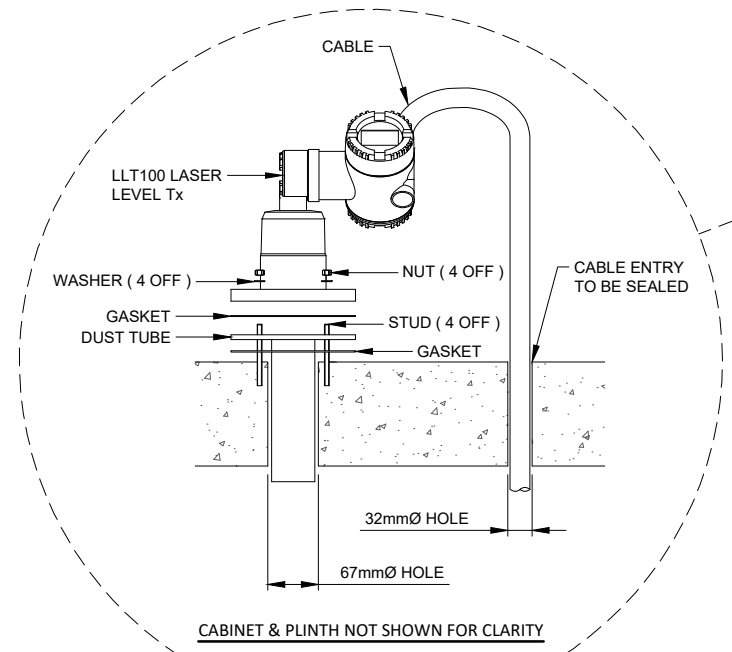
**KEYHOLE WEATHER FLAP  
GENERAL ARRANGEMENT**

DATUM:		
MELWAY REF:		
SCALE:		SHEET SIZE: A1
SEW DRAWING NUMBER		
<b>FLAP.STD.E.001</b>		
SEW JOB No:		REV
		<b>0</b>



**CONSTRUCTION NOTES :**

1. CABINET TO BE CONSTRUCTED FROM 3mm ALUMINIUM.
2. FIT DOOR WITH STAINLESS STEEL DOOR STAY.
3. DOORS TO BE SEALED WITH NEOPRENE STRIPS.
4. MINIMUM OPENING OF EXTERNAL DOORS 135 DEGREE.
5. TOP OR RIGHT LOCK 100 NIGHTLATCH, ABLOY 201 CYLINDERS ABLOY, M3 KEYS BY API SECURITY.
6. BOTTOM OR LEFT LOCK 213 DEADBOLT, ABLOY 201 CYLINDERS ABLOY, M3 KEYS BY API SECURITY.
7. HINGING - 304 GRADE STAINLESS STEEL
8. FIT RECESSED HANDLES ( 40 x 100 ) TO OUTER DOORS
9. PLINTH: 75mm x 50mm x 5mm CHANNEL HOT DIPPED GALVANISED. TOE OUT ALL ROUND.
10. EXTERNAL - POWDER COATED RIVERGUM GREEN C62 TO AS2700 (GLOSS)
11. INTERIOR - POWDER COATED RIVERGUM GREEN G62 TO AS2700 (GLOSS)
12. ALL EXTERNAL LOUVRES TO BE PRESSED IN. THE ALUMINIUM ARE TO BE FITTED WITH "ORNAMESH" ALUMINIUM MEASHING.
13. CABINET TO BE INSTALLED AWAY FROM ANY GATIC OR OPEN HOLES TO REMOVE ANY FALL FROM HEIGHT HAZARDS.

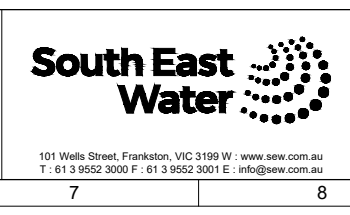


CAD FILE NAME: C:\Michael B\dwg\27 Laser Level Tx Cabinet\LLT100 Laser Level Install Standard.dwg

REV	DESCRIPTION	JOB No	DRAFTER	DES REVIEW	PM APPD	DATE	VENDOR DRAWING No:
0	FIRST ISSUE		M.L.			22.12.20	

DESIGNER	DRAFTER	SEW PROJECT MANAGER
J.STREET	M.LIM	
DESIGN REVIEW	DRAFT CHECK	ASSET/ENG. MANAGER
22.12.20		
APPROVED		

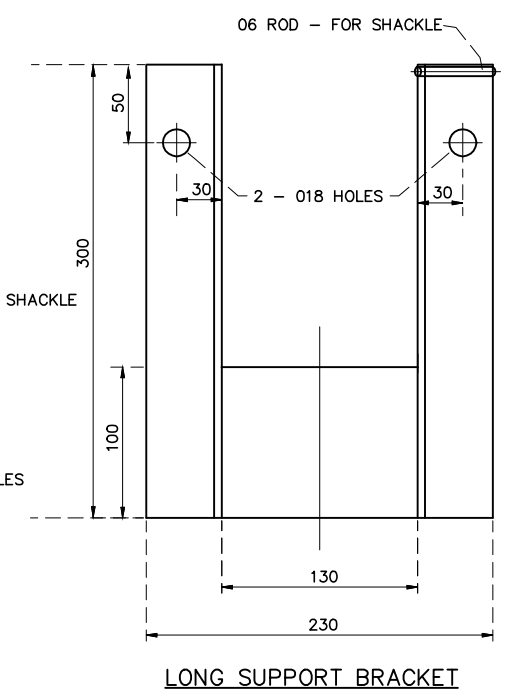
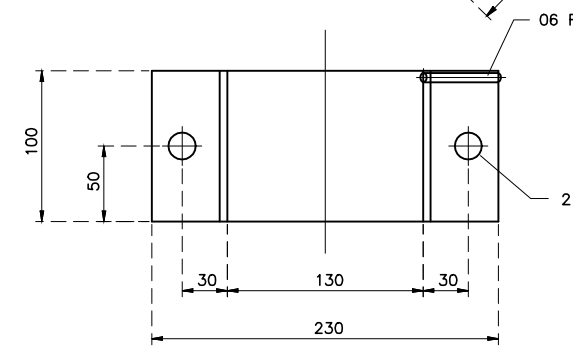
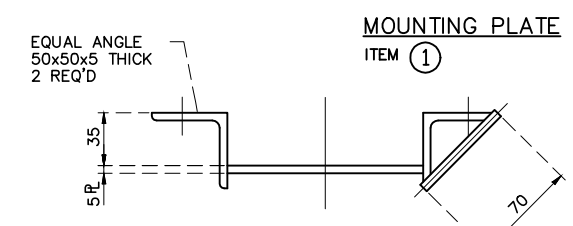
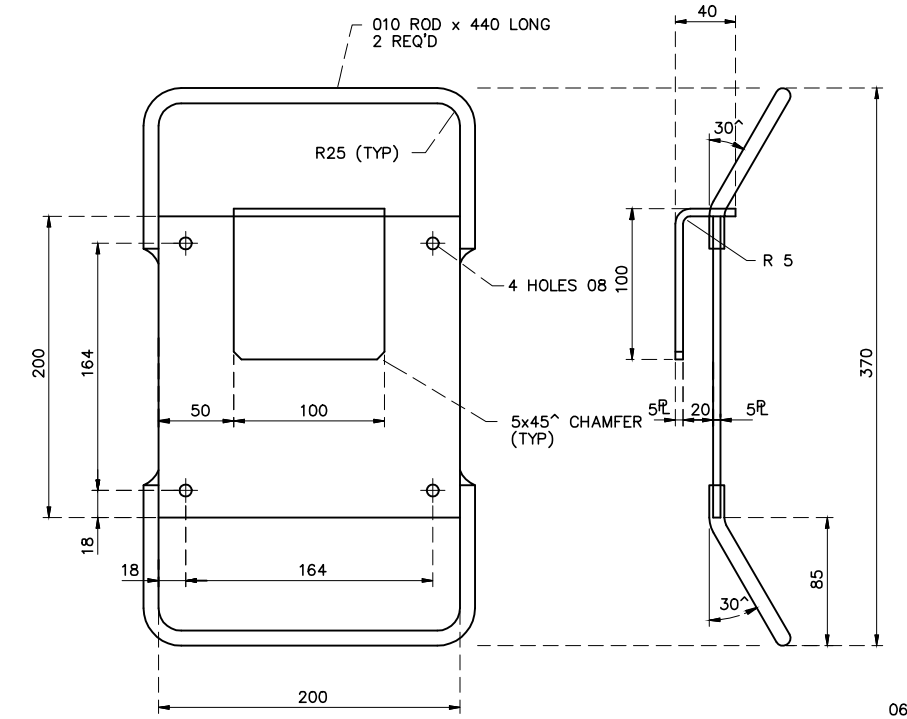
COPYRIGHT  
THIS DOCUMENT IS AND SHALL REMAIN THE PROPERTY OF SOUTH EAST WATER. THIS DOCUMENT MAY ONLY BE USED FOR THE PURPOSE FOR WHICH IT WAS COMMISSIONED AND IN ACCORDANCE WITH THE TERMS OF ENGAGEMENT FOR THE COMMISSION. THIS DESIGN SHOULD NOT BE COPIED OR AMENDED WITHOUT WRITTEN PERMISSION FROM SOUTH EAST WATER. UNAUTHORISED USE OF THIS DOCUMENT IN ANY WAY IS PROHIBITED.



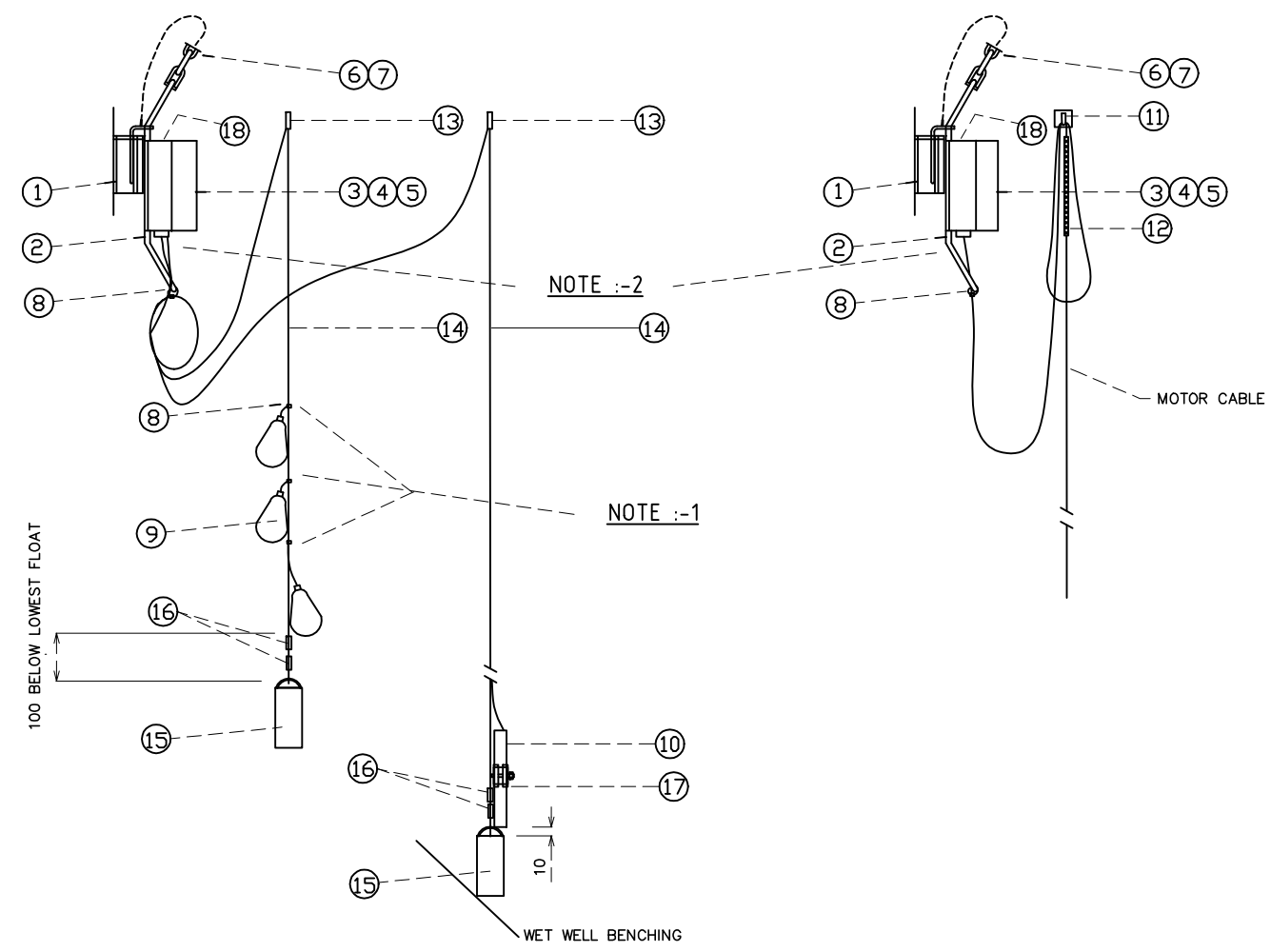
**LASER LEVEL INSTALL STANDARD  
GENERAL ARRANGEMENT**

DATUM:	
MELWAY REF:	
SCALE:	SHEET SIZE: A1
SEW DRAWING NUMBER	
<b>LLT.STD.E.001</b>	<b>0</b>
SEW JOB No:	REV

DRAWING NUMBER  
SEW\_STD\_030  
REV G



**NOTE:**  
1:- ALL CABLE TIES TO FLOATS AND LEVEL SENSOR TO BE STAINLESS STEEL SECURED TO EACH FLOAT INDIVIDUALLY AND GROUPED WHEN ALL FITTED SET 500mm APART AT BOTTOM THEN 900mm APART TO TOP  
2:- ALL CABLE ENTRIES TO BE FROM BOTTOM FLANGE OF BOX WITH CABLES SECURED TO BOTTOM HANDLE TO PREVENT CABLE GLAND STRAIN



**FLOAT / LEVEL PROBE ASSEMBLY**  
NTS

**MOTOR CABLE ASSEMBLY**  
PER PUMP - NTS

ITEM No.	DESCRIPTION	REMARKS
18	TREFOLYTE ENGRAVED LABEL (PUMP 1 / PUMP 2 / MIXER 1 / MIXER 2 / FLOAT SWITCHES)	ENGRAVED EXTERIOR GRADE TREFOLYTE LABEL MATERIAL (GLUED TO TOP FACE OF BOX WITH SILICONE ADHESIVE NO SCREWS TO BE USED)
17	HOSE CLAMP	316 STAINLESS STEEL, TRIDON TTBS32-35P
16	DOUBLE CRIPPING FERRULE & EYELET	316 STAINLESS STEEL (NOTE: COPPER NOT ALLOWED DUE TO CORROSION FAILURES)
15	SUPPORT WEIGHT	316 STAINLESS STEEL 150 x 75 DIA
14	CATENARY CABLE	4mm DIA. 316 STAINLESS STEEL PLASTIC COATED
13	SUPPORT HOOK, EYELET & GRIPPING FERRULE	316 STAINLESS STEEL
12	BRAIDED CABLE SUPPORT SOCK	316 STAINLESS STEEL
11	CABLE SUPPORT HOOK	316 STAINLESS
10	HYDROSTATIC LEVEL PROBE	VEGAWELL 52 Type WL52XXA4AMD1DD1X 4-20mA Hart + Pt100 4 Wire (Length 27 Mtr)
9	FLOAT SWITCH	METAVAL, MAC3
8	STAINLESS STEEL CABLE TIES	THOMAS & BETTS, SEWER GRADE
7	SMALL DEE SHACKLE Ø6	316 STAINLESS
6	Ø6 PWB REGULAR PROOF COIL CHAIN	316 STAINLESS
5	TERMINATIONS	TUNNEL TERMINALS WRAPPED WITH SELF AMALGAMATING TAPE
4	MOULDED CABLE GLANDS	
3	JUNCTION BOX C/W CLEAR LID & WING SCREWS	NHP-POLYCARBONATE IP68 180mmW X 180mmH X 130mmD OR LARGER WITH PLAIN SIDES
2	SUPPORT BRACKET	316 STAINLESS
1	MOUNTING PLATE	316 STAINLESS

THE ORIGINAL DRAWING WAS HAND SIGNED BY THE PERSON WHOSE NAME OR INITIALS APPEAR PRINTED AND MARKED THIS IN THE SIGNATURE BLOCKS.

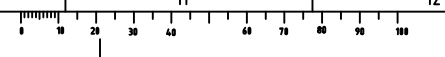
REV	ZONE	DESCRIPTION	DATE	APP'D
E		WEIGHT RAISED TO 100mm BELOW FLOAT	01/18	K.H.
D		BOXES LABELED TO SUIT (18)	04/15	K.H.
C		NOTES ADDED EQUIPMENT LIST UPDATED	02/14	K.H.
G		SS CABLE TIES FITTED FLOAT/ LEVEL PROBE ASSEMBLY	27.07.21	K.H.
F		316 STAINLESS MATERIAL ON EQUIPMENT LIST	03/18	K.H.

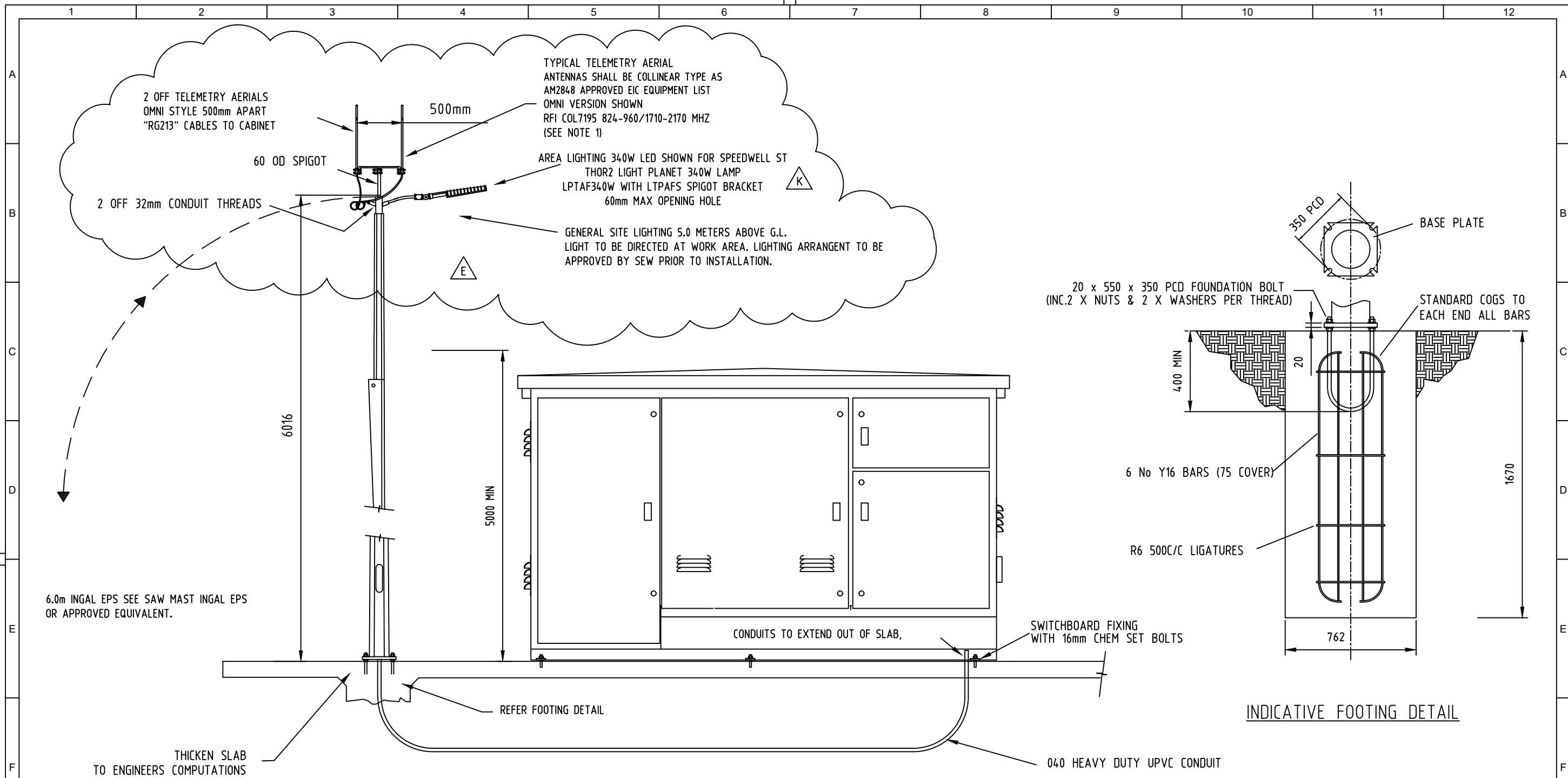
DESIGNED SEW	DRAWN JUHA MYYRLAINEN	PROJECT MGR.
DESIGN CHECK	DRAFT CHECK	GENERAL FILE No.
APPROVED	DATE 12/03/03	



SEWAGE PUMP STATION STANDARDS  
WET WELL FLOAT / MOTOR CABLE  
JUNCTION BOX SUPPORT AND ASSEMBLY

DO NOT SCALE		
SCALE: NTS		
DRAWING NUMBER		
SEW_STD_030		G
SHEET	OF	REV
1	12	





FRONT ELEVATION

INDICATIVE FOOTING DETAIL

-NOTES-

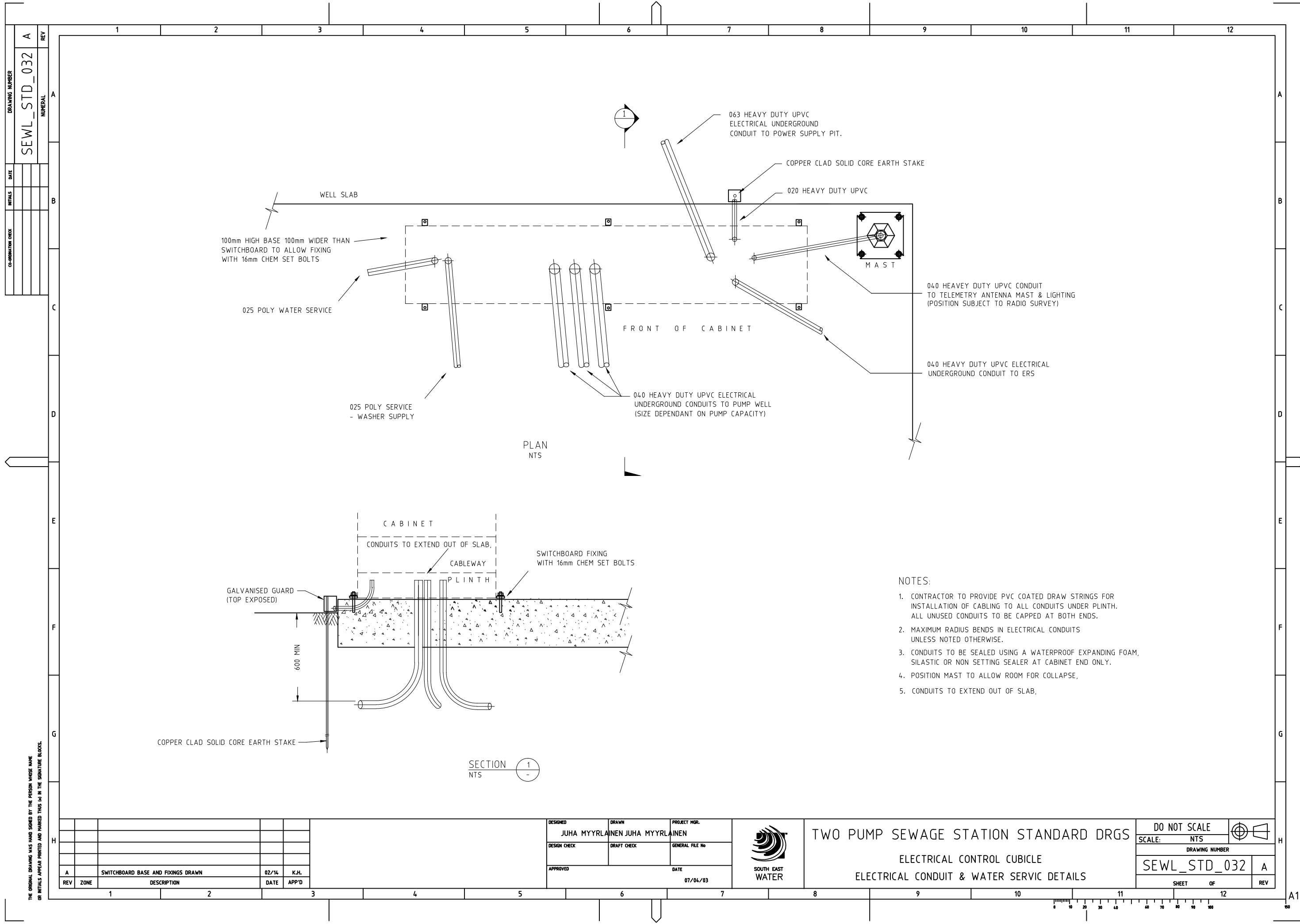
1. MAST DESIGN TO COMPLY WITH AS1170 AND 1798.
2. MAST WELDS TO COMPLY WITH AS1554.
3. MAST GALVANISING TO COMPLY WITH AS4680.
4. AERIAL CONNECTION - "N" TYPE COAXIAL END CONNECTION.  
CONNECTION TO BE WRAPPED WITH SELF AMALGAMATING TAPE.
5. FOOTING DETAIL BASED ON TERRAIN CAT2 TO AS1170.2 AND AN  
ALLOWABLE LATERAL SOIL BEARING PRESSURE OF 50kPa PER METRE  
DEPTH. FOOTING SIZES WILL VARY WITH SOIL CONDITIONS, WIND LOADING  
AND TERRAIN CATEGORIES.  
IT SHALL BE THE RESPONSIBILITY OF THE CONTRACTOR TO OBTAIN  
ENGINEERING COMPUTATIONS TO DETERMINE THE FOOTING DETAIL.

D	CABINET UGRADED TO CABLEWAY MODEL.	01/04/15	K.H
G	AERIAL REFERENCE ADDED, STD LIGHT CHANGED 340W	29.10.20	K.H
F	NOTES & REVISION HISTORY UPDATED	18/10/17	JM
E	2 X ANTENNA AND LED LIGHT ADDED	01/11/16	A.P.W
REV	DESCRIPTION	DATE	APP'D



**SEWAGE PUMPING STATION**  
STANDARD DESIGN REQUIREMENTS  
TELEMETRY MAST & SWITCHBOARD  
MOUNTING DETAILS

DO NOT SCALE		
SCALE: N.T.S.		
DRAWING NUMBER		
<b>SEW-STD-031</b>		<b>G</b>
SHEET 1 OF 1		REV



DRAWING NUMBER		SEWL_STD_032	
REV		A	
DATE		INITIALS	
CO-ORDINATOR		DESIGNER	

100mm HIGH BASE 100mm WIDER THAN SWITCHBOARD TO ALLOW FIXING WITH 16mm CHEM SET BOLTS

025 POLY WATER SERVICE

025 POLY SERVICE - WASHER SUPPLY

040 HEAVY DUTY UPVC ELECTRICAL UNDERGROUND CONDUITS TO PUMP WELL (SIZE DEPENDANT ON PUMP CAPACITY)

063 HEAVY DUTY UPVC ELECTRICAL UNDERGROUND CONDUIT TO POWER SUPPLY PIT.

COPPER CLAD SOLID CORE EARTH STAKE

020 HEAVY DUTY UPVC

M A S T

040 HEAVY DUTY UPVC CONDUIT TO TELEMETRY ANTENNA MAST & LIGHTING (POSITION SUBJECT TO RADIO SURVEY)

040 HEAVY DUTY UPVC ELECTRICAL UNDERGROUND CONDUIT TO ERS

PLAN NTS

SECTION NTS

NOTES:

1. CONTRACTOR TO PROVIDE PVC COATED DRAW STRINGS FOR INSTALLATION OF CABLING TO ALL CONDUITS UNDER PLINTH. ALL UNUSED CONDUITS TO BE CAPPED AT BOTH ENDS.
2. MAXIMUM RADIUS BENDS IN ELECTRICAL CONDUITS UNLESS NOTED OTHERWISE.
3. CONDUITS TO BE SEALED USING A WATERPROOF EXPANDING FOAM, SILASTIC OR NON SETTING SEALER AT CABINET END ONLY.
4. POSITION MAST TO ALLOW ROOM FOR COLLAPSE,
5. CONDUITS TO EXTEND OUT OF SLAB,

THE ORIGINAL DRAWING WAS HAND SIGNED BY THE PERSON WHOSE NAME OR INITIALS APPEAR PRINTED AND MARKED THIS IN THE SIGNATURE BLOCKS.

DESIGNED	JUHA MYRLLAINEN	DRAWN	JUHA MYRLLAINEN	PROJECT MGR.	
DESIGN CHECK		DRAFT CHECK		GENERAL FILE No	
APPROVED		DATE	07/04/03		
REV	ZONE	DESCRIPTION	DATE	APP'D	
A		SWITCHBOARD BASE AND FIXINGS DRAWN	02/14	K.H.	

DESIGNED	JUHA MYRLLAINEN	DRAWN	JUHA MYRLLAINEN	PROJECT MGR.	
DESIGN CHECK		DRAFT CHECK		GENERAL FILE No	
APPROVED		DATE	07/04/03		



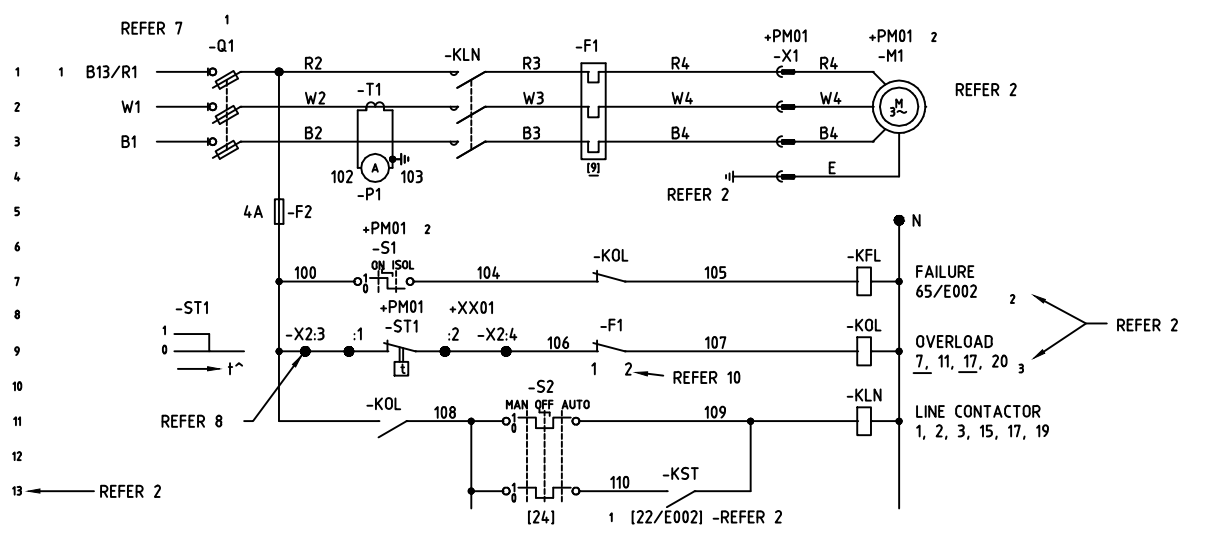
TWO PUMP SEWAGE STATION STANDARD DRGS  
ELECTRICAL CONTROL CUBICLE  
ELECTRICAL CONDUIT & WATER SERVIC DETAILS

DO NOT SCALE		SCALE: NTS	
DRAWING NUMBER			
SEWL_STD_032		A	
SHEET OF		REV	



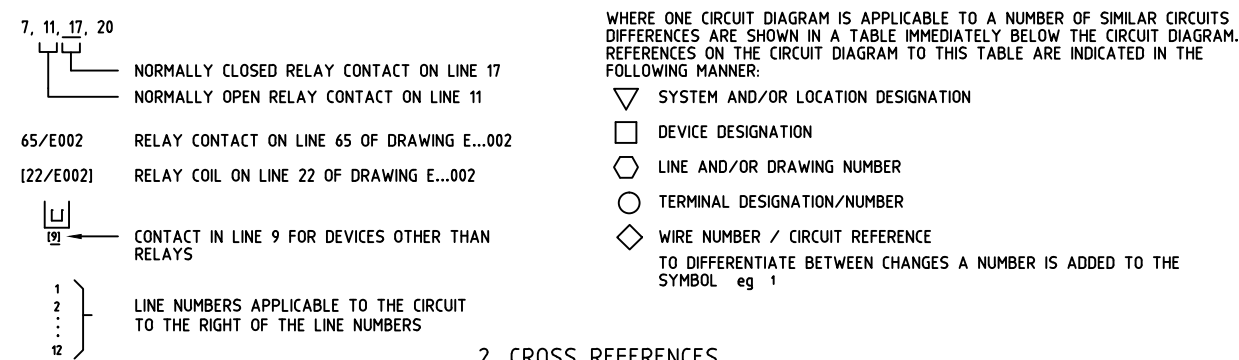
A1

DRAWING NUMBER  
SEWL\_STD\_037  
REV  
A

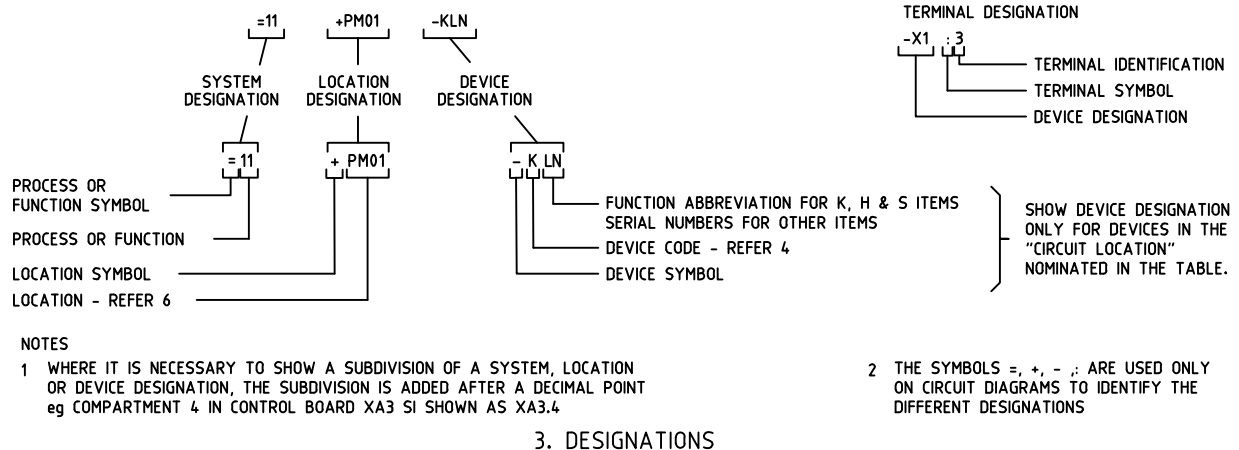


PUMP	CIRCUIT LOCATION	CCT REF	LOCATION	ITEM	DRG REF	
PM01	+ZB13	B13	+XX01	+PM01	-Q1 [22/E002]	65/E002 70
PM02	+ZB14	B14	+XX02	+PM02	-Q2 [26/E002]	71/E002 71

FOR SINGLE CIRCUIT DIAGRAMS THE CIRCUIT REFERENCE AND CIRCUIT LOCATION ARE SHOWN BELOW THE CIRCUIT TITLE.  
**RAW SEWAGE PUMPS**  
1. TYPICAL CIRCUIT DIAGRAM



2. CROSS REFERENCES

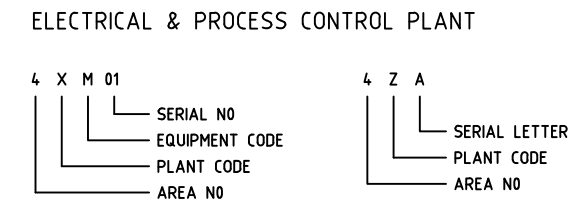


3. DESIGNATIONS

M	SIGNALLING DEVICES	R	RESISTORS	Z	NETWORKS, FILTERS, LIMITERS
G	GENERATORS, SUPPLIES	Q	MECHANICAL SWITCHING DEVICES	Y	ELECTRICALLY OPERATED MECHANICAL DEVICES
F	PROTECTIVE DEVICES	P	MEASURING AND TESTING EQUIPMENT	X	TERMINALS, PLUGS, SOCKETS
E	MISCELLANEOUS	N	ANALOGUE INTEGRATED CIRCUITS	W	TRANSMISSION PATHS, AERIALS
D	BINARY ELEMENTS, DELAY DEVICES	M	MOTORS	V	TUBES, SEMICONDUCTORS
C	CAPACITORS	L	INDUCTORS	U	MODULATORS
B	TRANSDUCERS	K	RELAYS, CONTACTORS	T	TRANSFORMERS
A	ASSEMBLIES, SUB-ASSEMBLIES	J		S	SWITCHES, SELECTORS

THE LETTER CODES APPEAR AS THE FIRST LETTER FOR DEVICE DESIGNATION.  
THE LETTER CODES APPEAR AS THE SECOND LETTER OF EQUIPMENT NUMBER FOR ELECTRICAL AND PROCESS CONTROL EQUIPMENT.  
WHEN NECESSARY TO DEFINE AN AUXILIARY FUNCTION OF A COMPOSITE DEVICE eg TEMPERATURE SWITCH IN MOTOR WINDINGS.  
THE LETTER CODE IS USED AS A SUFFIX TO THE DEVICE DESIGNATION.

4. LETTER CODES



PLANT CODE:  
X - ELECTRICAL PLANT NOT CONTAINING A BUS  
Y - PROCESS CONTROL PLANT  
Z - ELECTRICAL PLANT CONTAINING A BUS

NOTE X & Y PLANT EQUIPMENT NUMBERS ARE ONLY USED WHERE AN EQUIPMENT IS NOT ASSOCIATED WITH A PARTICULAR ITEM OF MECHANICAL EQUIPMENT.

EQUIPMENT CODE:  
THE CODE IS SELECTED FROM TABLE 4 FOR THE TYPE OF EQUIPMENT

SERIAL NUMBER: X & Y PLANT  
SERIAL NUMBER COMMENCING AT 01 FOR ALL "X" PLANT IN AN AREA SIMILARLY FOR "Y" PLANT

LETTER NUMBER: Z PLANT  
AC BUS IDENTIFICATION LETTER COMMENCING AT A FOR ALL AC BUSES IN AN AREA.  
DC BUS IDENTIFICATION COMMENCING AT Z AND REGRESSING.

MECHANICAL PLANT  
WHERE A MECHANICAL EQUIPMENT NUMBER IS ALLOCATED TO A PIECE OF EQUIPMENT AN ELECTRICAL OR PROCESS CONTROL EQUIPMENT NUMBER IS NOT ALLOCATED TO THAT PIECE OF EQUIPMENT. THE MECHANICAL EQUIPMENT NUMBER WILL BE USED AS THE LOCATION DESIGNATION ON THE ELECTRICAL DRAWINGS eg PM01 IS THE MECHANICAL EQUIPMENT NUMBER FOR THE PUMP MOTOR SHOWN ON THIS DRAWING.

5. PLANT EQUIPMENT NUMBER

ITEMS MOUNTED ON MECHANICAL, ELECTRICAL AND PROCESS CONTROL PLANT: THE PLANT EQUIPMENT NUMBER IS USED AS THE LOCATION REFERENCE- REFER 5.

ITEMS MOUNTED IN ISOLATED POSITIONS:  
THE GRID REFERENCE FOR THE CIVIL WORKS IS USED TO LOCATE POSITION. THE REFERENCE IS SHOWN IN BRACKETS eg (B17)

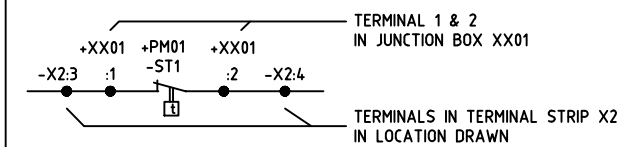
EQUIPMENT IN A COMPARTMENT:  
THE COMPARTMENT IS ALLOCATED A NUMBER WHICH IS APPENDED TO THE PLANT EQUIPMENT NUMBER AFTER A FULL STOP eg



6. LOCATION REFERENCE

BUS REFERENCE ——— CIRCUIT NUMBER  
SINGLE PHASE CIRCUITS ARE PREFIXED BY A LETTER (R,W,B) TO INDICATE THE PHASE TO WHICH THEY ARE CONNECTED eg RB13.  
CIRCUIT REFERENCES ARE USED AS A PREFIX FOR CABLE NUMBERS, CABLE CORES AND WIRING IN ENCLOSURES WHICH HAVE MIXED CIRCUITS.

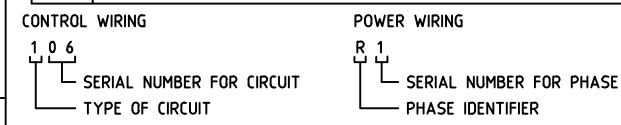
7. CIRCUIT REFERENCE



NOTE THAT DEVICE DESIGNATION MAY BE OMITTED IF THERE IS ONLY ONE TERMINAL STRIP AT THE LOCATION.

8. TERMINATIONS

9	RESERVED FOR SPECIAL PURPOSES
8	TELEMETRY OR COMPUTER OUTPUTS
7	TELEMETRY OR COMPUTER INPUTS
6	ALARMS
5	INDICATIONS-WHERE SEPARATE CIRCUITS ARE USED
4	RESERVED FOR SPECIAL PURPOSES
3	INSTRUMENTATION
2	ELV CONTROL PROTECTION METERING CT AND VT CIRCUITS INDICATIONS (TYPE 5) POWER SUPPLIES TO INSTRUMENTATION, ALARMS ETC
1	LV AND ABOVE
0	RESERVED FOR SPECIAL PURPOSES
TYPE	DESCRIPTION



9. WIRE NUMBERS

IF REQUIRED TERMINAL MARKINGS ON ITEMS ARE SHOWN IMMEDIATELY ADJACENT TO THE TERMINAL POINTS. THE COLON (:) IS NOT USED

10. TERMINAL MARKING

REFER: AS 1102 - FOR SYMBOLS  
AS 1103 - FOR DIAGRAMS, CHARTS AND TABLES  
AS 3702 - FOR ITEM DESIGNATION

11. STANDARDS

**SYMBOLS AND GENERAL NOTES**

—	EX. SEW. 225mm DIAM & UNDER	●	ACCESS CHAMBER CIRCULAR	Sq	SQUARE JUNCTION
—	EX. SEW. 300mm DIAM & OVER	●	ACCESS CHAMBER GAS CHECK	Ob	OBLIQUE JUNCTION
—	PROP. SEW. 225mm DIAM & UNDER	●	ACCESS CHAMBER FLAT TOP	W	WATER MAINS
—	PROP. SEW. 300mm DIAM & OVER	●	DROP IN ACCESS CHAMBER	G	GAS MAINS
—	INSPECTION SHAFT	—	LAUNDER IN ACCESS CHAMBER	E	ELECT. CABLES
—	END OF PIPE	lg	LANDING IN ACCESS CHAMBER	T	TPHONE CABLES

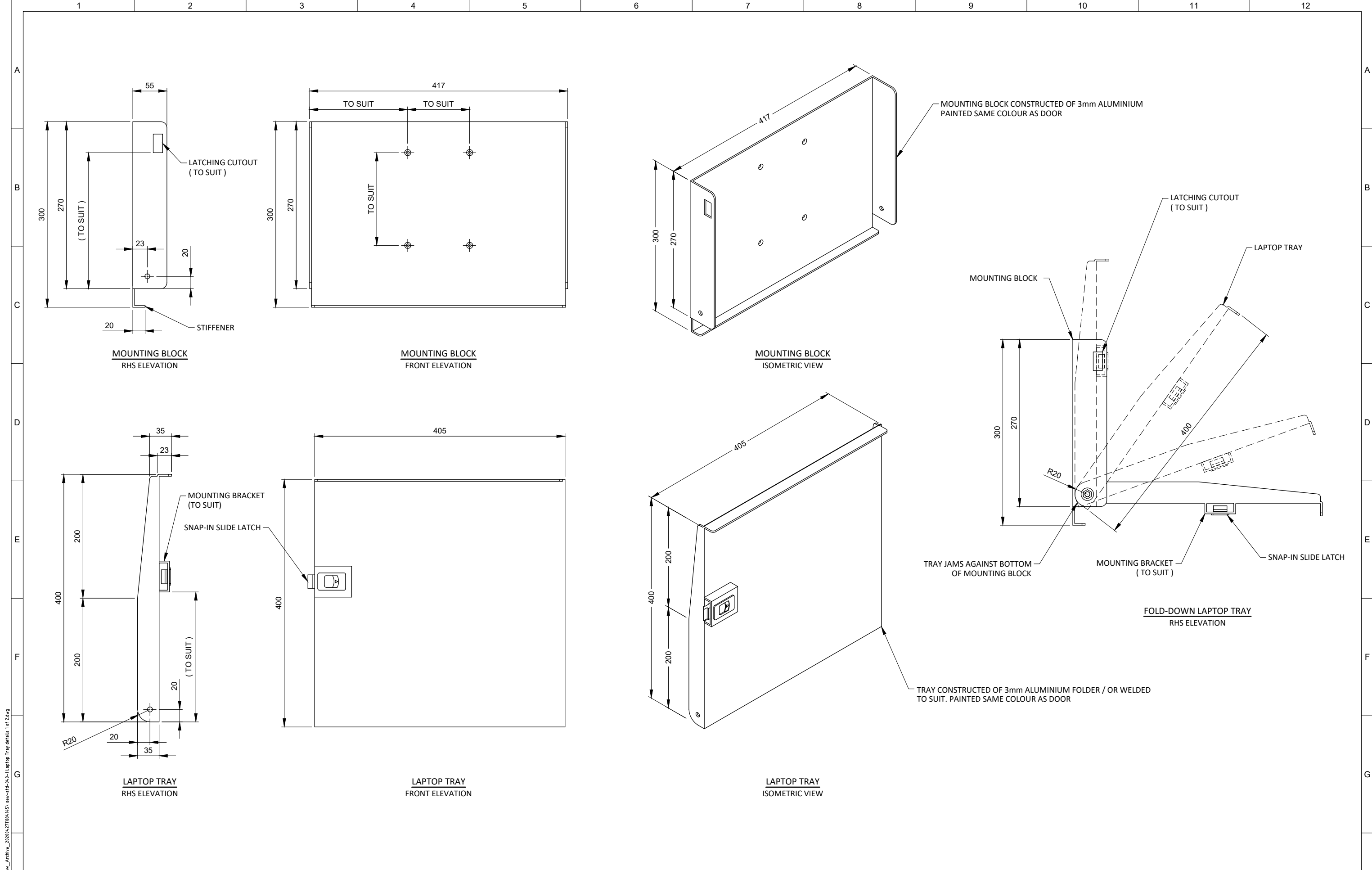
DESIGNED	SEWL	DRAWN	PROJECT MGR.
DESIGN CHECK		DRAFT CHECK	GENERAL FILE No
APPROVED		DATE	08/04/03



**SEWAGE PUMP STATION STANDARDS**  
ELECTRICAL SCHEMATIC STANDARDS  
LOCATION, REFERENCES, DESIGNATIONS AND CODES

DO NOT SCALE	
SCALE:	NTS
DRAWING NUMBER	
SEWL_STD_037 A	
SHEET	OF
12	REV

THE ORIGINAL DRAWING WAS HAND SIGNED BY THE PERSON WHOSE NAME OR INITIALS APPEAR PRINTED AND MARKED THIS IN THE SIGNATURE BLOCKS.



DESIGNER	J.STREET	DATE	28.02.20
DRAFTER	M.LIM	DATE	06.02.20
SEW PROJECT MANAGER	ASSET/ENG. MANAGER	APPROVED	
DESIGN REVIEW	DRAFT CHECK	VENDOR DRAWING No.	
REV	DESCRIPTION	JOB No	DRAFTER
DES REVIEW	PM APPD	DATE	
0	NEW DRAWING		M.L.
1			

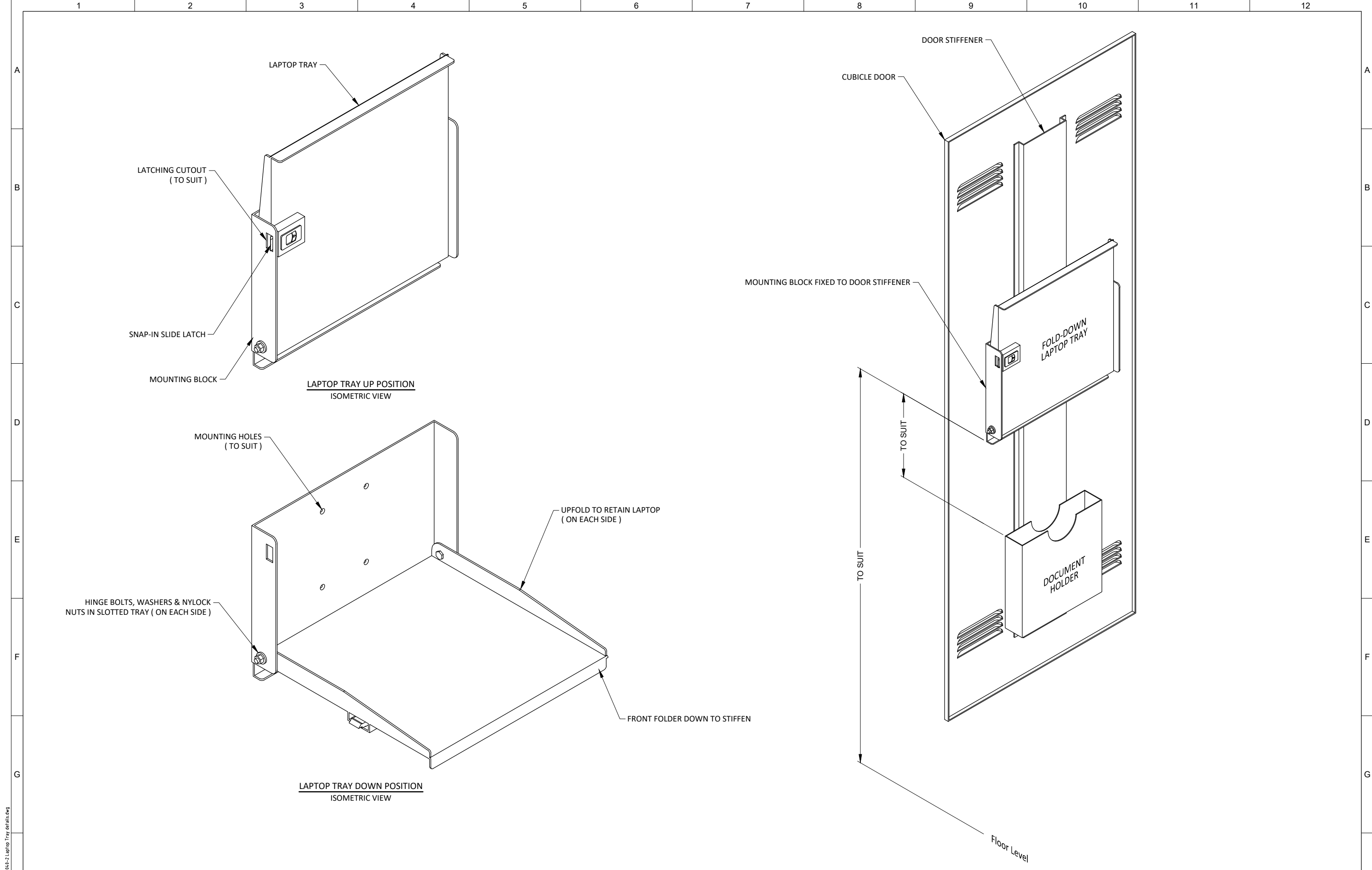
COPYRIGHT  
 THIS DOCUMENT IS AND SHALL REMAIN THE PROPERTY OF SOUTH EAST WATER. THIS DOCUMENT MAY ONLY BE USED FOR THE PURPOSE FOR WHICH IT WAS COMMISSIONED AND IN ACCORDANCE WITH THE TERMS OF ENGAGEMENT FOR THE COMMISSION. THIS DESIGN SHOULD NOT BE COPIED OR AMENDED WITHOUT WRITTEN PERMISSION FROM SOUTH EAST WATER. UNAUTHORISED USE OF THIS DOCUMENT IN ANY WAY IS PROHIBITED ©

**South East Water**

101 Wells Street, Frankston, VIC 3199 W : www.sew.com.au  
 T : 61 3 9552 3000 F : 61 3 9552 3001 E : info@sew.com.au

SEWER PUMP STATION  
 DESIGN DRAWINGS STANDARDS  
 STATION CONTROL  
 LAPTOP TRAY DETAILS ( SHEET 1 OF 2 )

DATUM:	
MELWAY REF:	
SCALE:	SHEET SIZE: A1
SEW DRAWING NUMBER	
SEW-STD-040-1	
SEW JOB No:	0
REV	



DESIGNER	J.STREET	DATE	28.02.20
DRAFTER	M.LIM	DATE	06.02.20
SEW PROJECT MANAGER	ASSET/ENG. MANAGER		
APPROVED			
DESIGN REVIEW	DRAFT CHECK		

DESIGNER	J.STREET
DRAFTER	M.LIM
SEW PROJECT MANAGER	ASSET/ENG. MANAGER
APPROVED	
DESIGN REVIEW	DRAFT CHECK

COPYRIGHT  
 THIS DOCUMENT IS AND SHALL REMAIN THE PROPERTY OF SOUTH EAST WATER. THIS DOCUMENT MAY ONLY BE USED FOR THE PURPOSE FOR WHICH IT WAS COMMISSIONED AND IN ACCORDANCE WITH THE TERMS OF ENGAGEMENT FOR THE COMMISSION. THIS DESIGN SHOULD NOT BE COPIED OR AMENDED WITHOUT WRITTEN PERMISSION FROM SOUTH EAST WATER. UNAUTHORISED USE OF THIS DOCUMENT IN ANY WAY IS PROHIBITED ©

**South East Water**

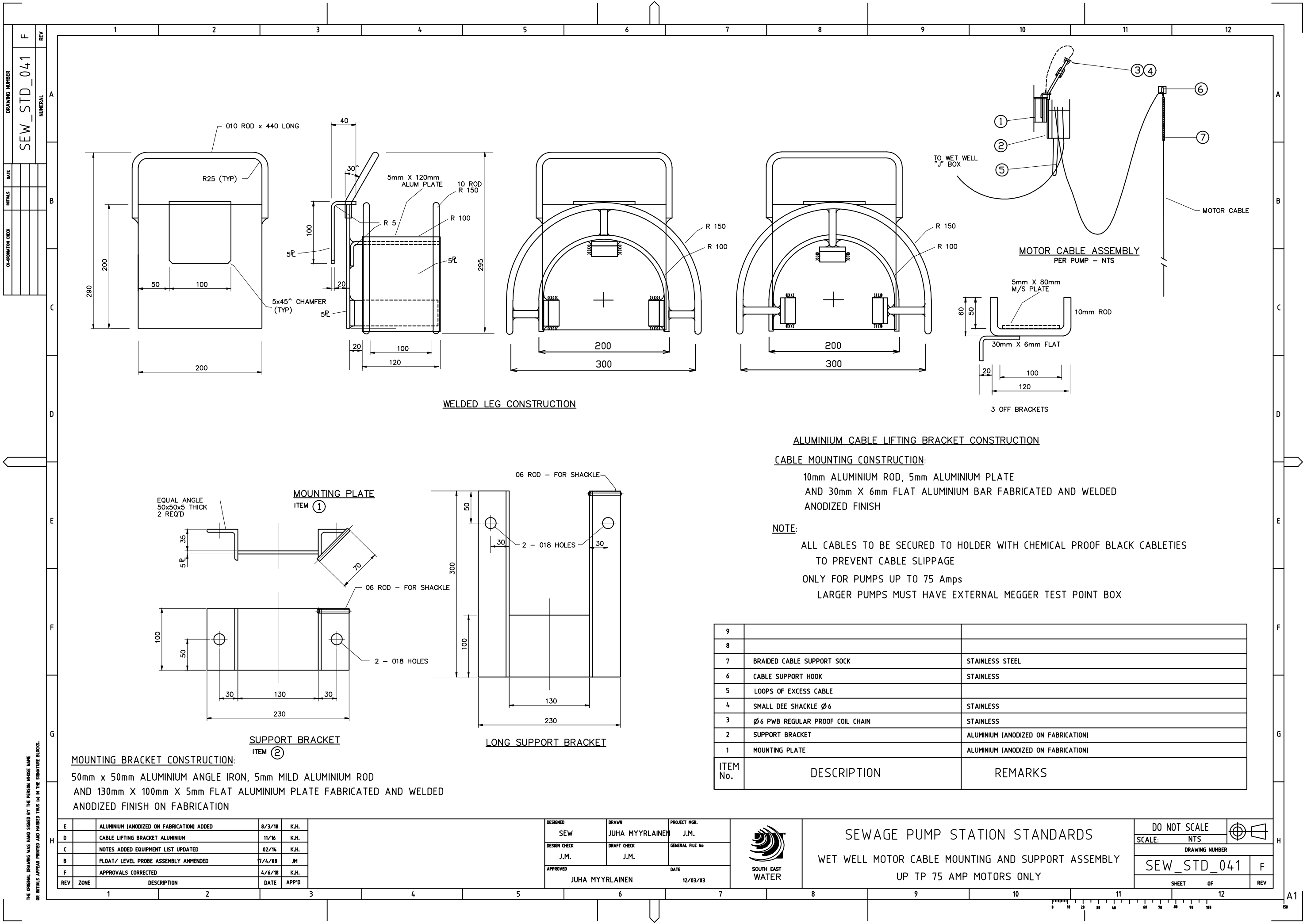
101 Wells Street, Frankston, VIC 3199 W : www.sew.com.au  
 T : 61 3 9552 3000 F : 61 3 9552 3001 E : info@sew.com.au

SEWER PUMP STATION  
 DESIGN DRAWINGS STANDARDS  
 STATION CONTROL  
 LAPTOP TRAY DETAILS ( SHEET 2 OF 2 )

DATUM:	
MELWAY REF:	
SCALE:	SHEET SIZE: A1
SEW DRAWING NUMBER	
SEW-STD-040-2	0
SEW JOB No:	REV

CAD FILE NAME: C:\Michael Backus\sew-std-040-2 Laptop Tray details.dwg





DRAWING NUMBER		SEW_STD_041	
REV		F	
DATE	INITIALS	DATE	INITIALS
COORDINATING CHECK			

**WELDED LEG CONSTRUCTION**

**ALUMINIUM CABLE LIFTING BRACKET CONSTRUCTION**

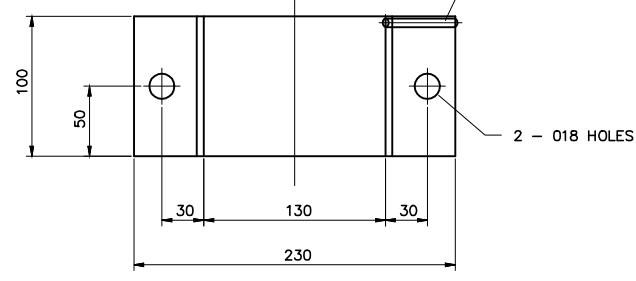
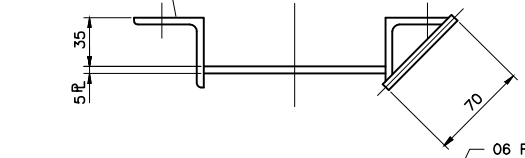
**CABLE MOUNTING CONSTRUCTION:**

10mm ALUMINIUM ROD, 5mm ALUMINIUM PLATE AND 30mm X 6mm FLAT ALUMINIUM BAR FABRICATED AND WELDED ANODIZED FINISH

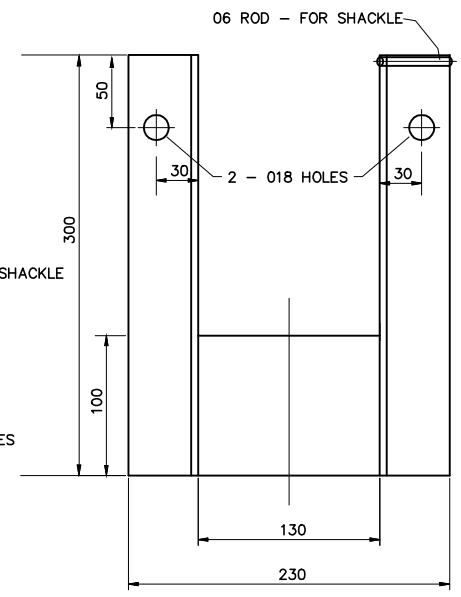
**NOTE:**

ALL CABLES TO BE SECURED TO HOLDER WITH CHEMICAL PROOF BLACK CABLETIES TO PREVENT CABLE SLIPPAGE  
 ONLY FOR PUMPS UP TO 75 Amps  
 LARGER PUMPS MUST HAVE EXTERNAL MEGGER TEST POINT BOX

**MOUNTING PLATE**  
ITEM ①



**SUPPORT BRACKET**  
ITEM ②



**LONG SUPPORT BRACKET**

**MOUNTING BRACKET CONSTRUCTION:**  
 50mm x 50mm ALUMINIUM ANGLE IRON, 5mm MILD ALUMINIUM ROD AND 130mm X 100mm X 5mm FLAT ALUMINIUM PLATE FABRICATED AND WELDED ANODIZED FINISH ON FABRICATION

ITEM No.	DESCRIPTION	REMARKS
9		
8		
7	BRAIDED CABLE SUPPORT SOCK	STAINLESS STEEL
6	CABLE SUPPORT HOOK	STAINLESS
5	LOOPS OF EXCESS CABLE	
4	SMALL DEE SHACKLE Ø6	STAINLESS
3	Ø6 PWB REGULAR PROOF COIL CHAIN	STAINLESS
2	SUPPORT BRACKET	ALUMINIUM [ANODIZED ON FABRICATION]
1	MOUNTING PLATE	ALUMINIUM [ANODIZED ON FABRICATION]

REV	ZONE	DESCRIPTION	DATE	APP'D
E		ALUMINIUM [ANODIZED ON FABRICATION] ADDED	8/3/18	K.H.
D		CABLE LIFTING BRACKET ALUMINIUM	11/16	K.H.
C		NOTES ADDED EQUIPMENT LIST UPDATED	02/16	K.H.
B		FLOAT/ LEVEL PROBE ASSEMBLY AMENDED	7/4/08	JM
F		APPROVALS CORRECTED	4/6/18	K.H.

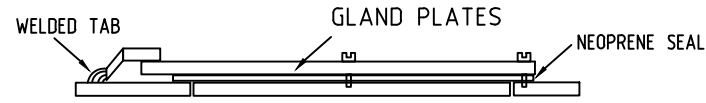
DESIGNED	DRAWN	PROJECT MGR.
SEW	JUHA MYYRLAINEN	J.M.
DESIGN CHECK	DRAFT CHECK	GENERAL FILE No
J.M.	J.M.	
APPROVED	DATE	
JUHA MYYRLAINEN	12/03/03	



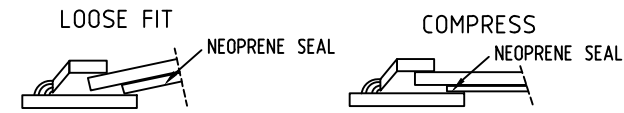
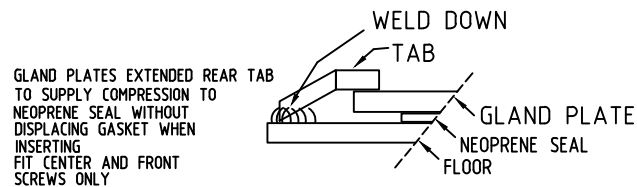
SEWAGE PUMP STATION STANDARDS  
 WET WELL MOTOR CABLE MOUNTING AND SUPPORT ASSEMBLY  
 UP TP 75 AMP MOTORS ONLY

DO NOT SCALE		
SCALE:	NTS	
DRAWING NUMBER		
SEW_STD_041		F
SHEET OF		REV

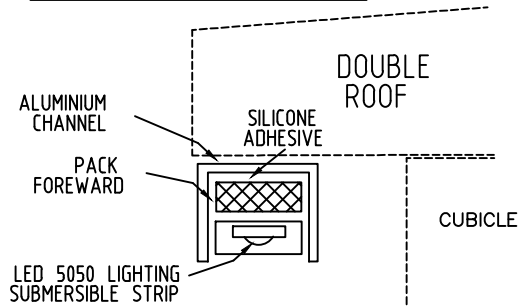
THE ORIGINAL DRAWING WAS HAND SIGNED BY THE PERSON WHOSE NAME OR INITIALS APPEAR PRINTED AND MARKED THIS IN THE SIGNATURE BLOCKS.



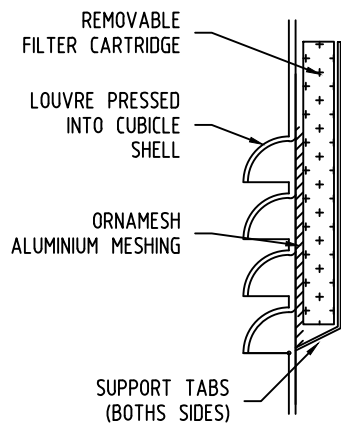
LIMITED ACCESS TO REAR FIXING DUE TO OVERHANGING DUCTS AND FITTED CABLES - TAB TO BE FOLDED & WELDED IN PLACE AND ADJUSTED TO SUPPLY COMPRESSION



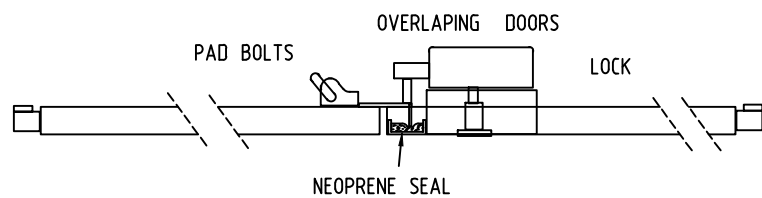
INTERNAL GLAND PLATES



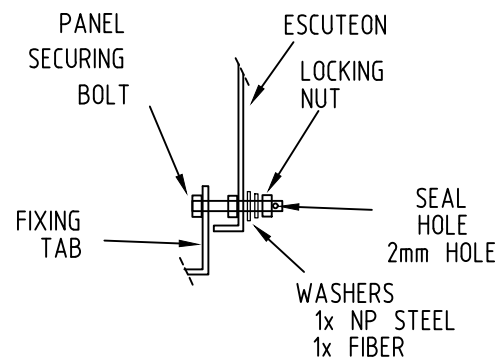
LED ROOF EDGE LIGHTING



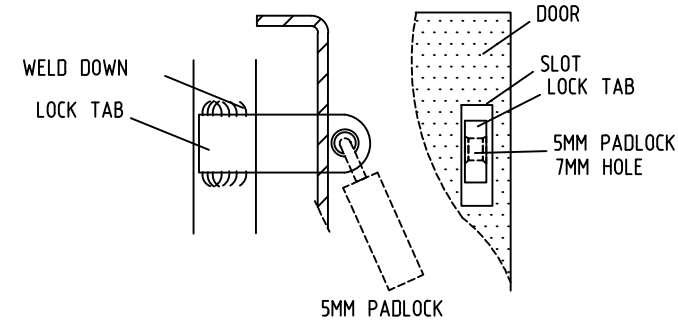
VENTILATION LOUVRE



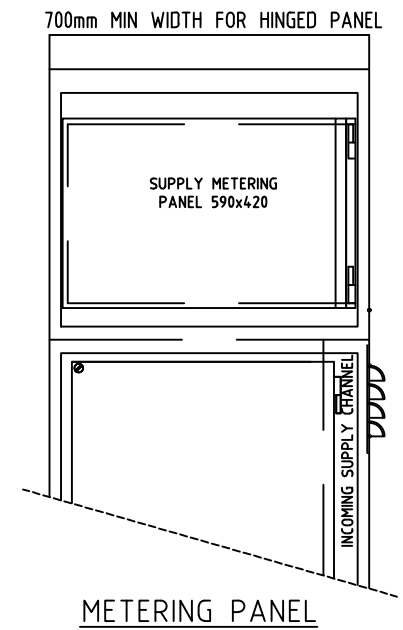
OVERLAPPING DOORS



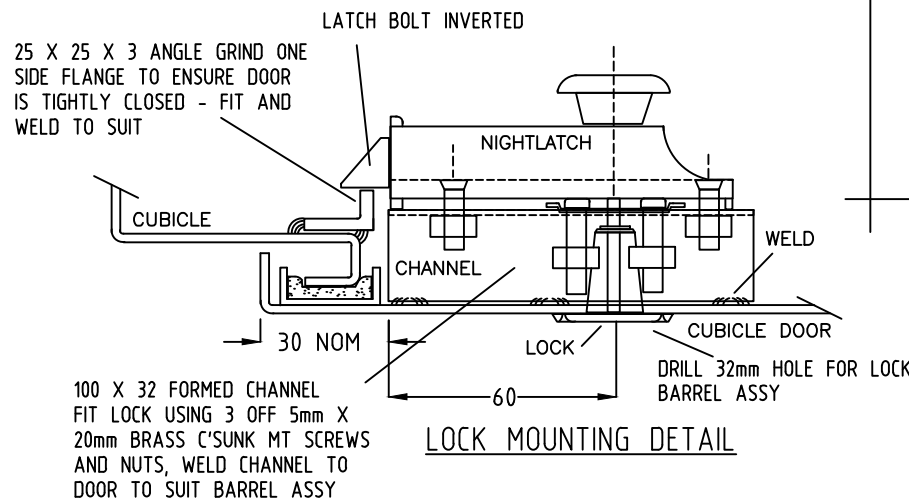
CT DOOR SECURITY SEAL BOLT



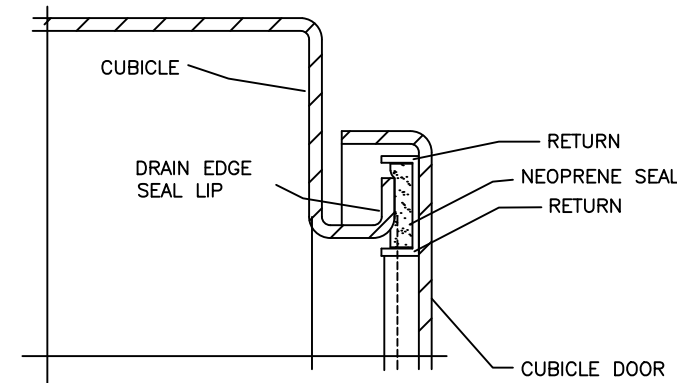
CT DOOR PADLOCK TAB



METERING PANEL

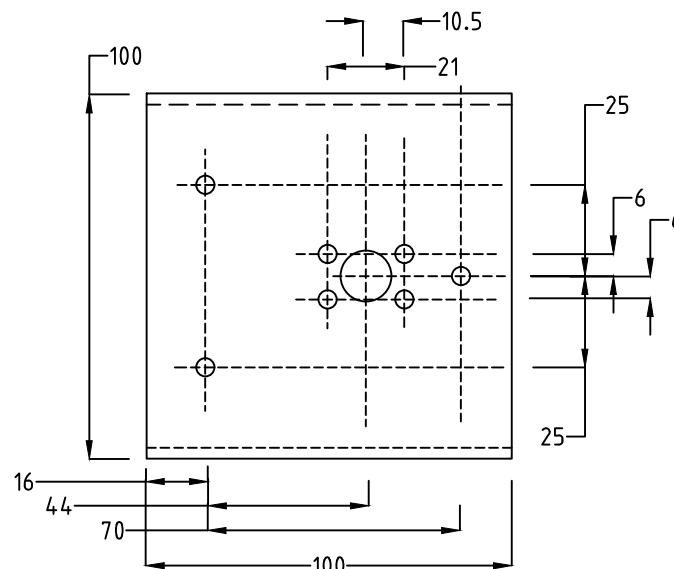
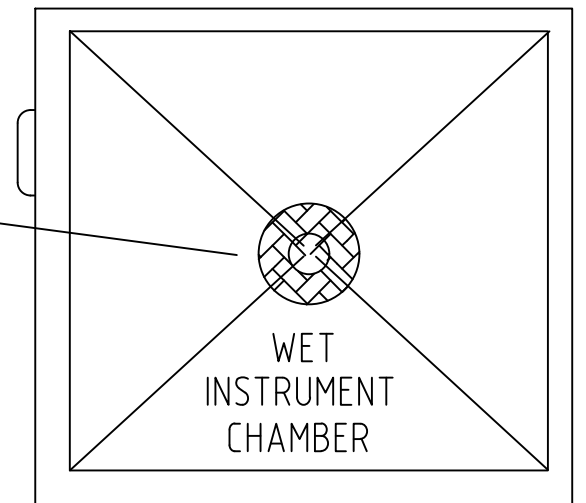


LOCK MOUNTING DETAIL

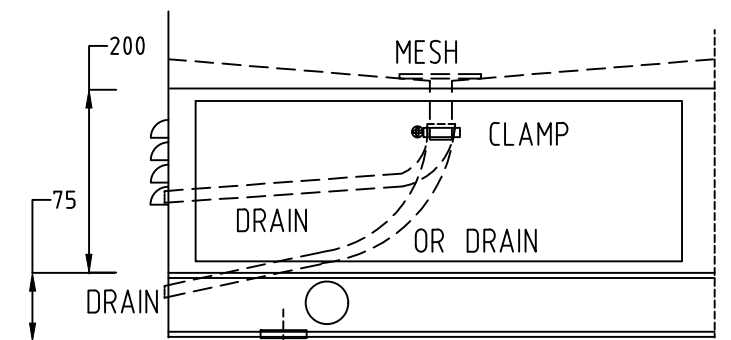


TYPICAL EXTERNAL DOOR SEALING

4 WAY SLOPING FLOOR WITH DRAIN TUBE AND VERMIN MESH



LOCK MOUNTING SPACER CHANNEL LEFT OR RIGHT HANDED



WET CHAMBER DRAIN

DESIGNED	K.H.	DRAWN	K.H.	PROJECT MGR.	J.M.
DESIGN CHECK	K.H.	DRAFT CHECK		GENERAL FILE No	
APPROVED	J.STREET	DATE	07/17		
REV	ZONE	DESCRIPTION	DATE	APP'D	
A		APPROVALS CORRECTED	4/6/18	K.H.	

DESIGNED	K.H.	PROJECT MGR.	J.M.
DESIGN CHECK	K.H.	GENERAL FILE No	
APPROVED	J.STREET	DATE	07/17

South East Water  
SOUTH EAST WATER  
101 WELLS STREET  
FRANKSTON 3199

MISCELLANEOUS SWITCHBOARD  
DETAILS  
STANDARDS DIAGRAM

DO NOT SCALE	
SCALE: NTS	
DRAWING NUMBER	SEW-STD.E.044
SHEET OF	12
REV	A